
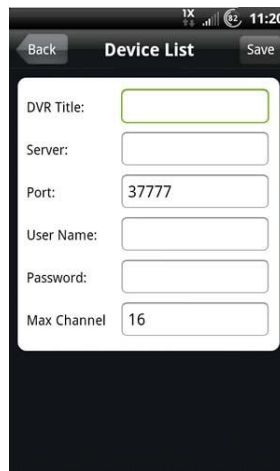


ICRSS Pro App for Android.

Step 1: Start by tapping on the ICRSS Pro icon to Launch the App.



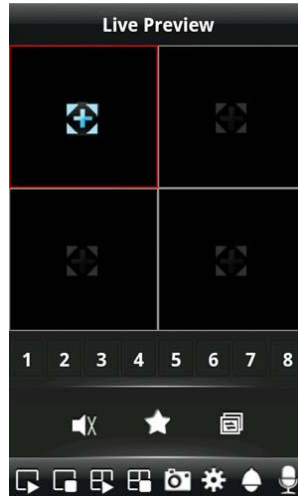
- **Step 2:** You should be taken to the live window preview where we will start by adding a device to your application. Tap the Settings icon  to add your ICRealtime Device information.
- **Step 3:** You will be taken in to the menu tree. Tap on 'Device List' to be taken where all device information is stored. Choose the 'Add' button to begin adding in your device's information.





- **Step 4:** Now just fill in the fields with your devices network info.

Name:	bwft
Address:	50.125.69.170
Port:	4000
User Name:	bowwow
Password:	bowwow
Channel amount:	8

- **Step 6:** Once you have saved your device information. Click the back arrow which will bring you back to the settings menu. Tap on 'Live Preview' to now take you back to the viewing screen.



- **Step 7:** Tap on one of the windows first which when selected should draw a red border around it. To load your cameras either tap on the device list icon  or .
- **Step 8:** Your Device list will load, now just tap a device then a camera/channel name to stream in the selected window. Repeat until you have all windows streaming as needed.



Channel
2
4
5
6
7

Spaces
swimming pool
outside small
outside large
inside large
inside small

There is a \$29.99 charge for this app